

YP SERIES (3-Phase 3-Wire Filters, 3-Phase 4-Wire Filters)



Features

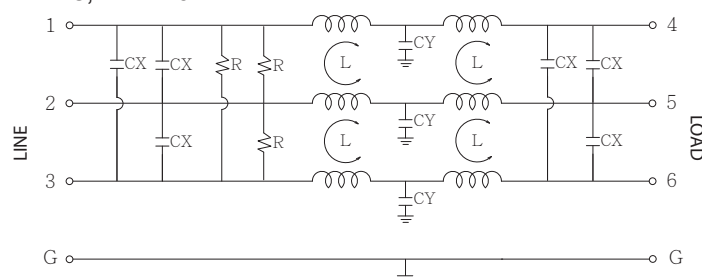
- Good noise attenuation in both forward and reverse directions for common mode and normal mode.
- High reliability designed for industrial equipment usage with 3-Phase 3-Wire and 3-Phase 4-Wire.
- The rated current can be offered from 60 to 250 amps.
- Various screw terminals output for different amps is designed for easy installation.
- Custom-specific versions are available on request.

Technical Specification

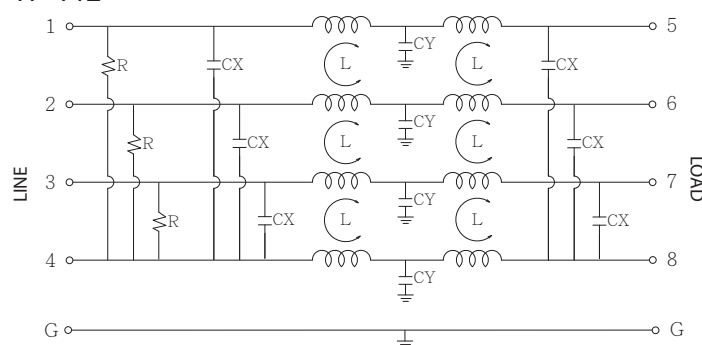
Rated voltage	500VAC
Rated currents	up to 250A
Operating frequency	50/60Hz
Hipot rating(Line-to-line)	1450VDC
Hipot rating(Line-to-ground)	2250VDC
Operating temperature	-25~+85°C
Safety compliance	CE

Typical electrical schematic

YP-T8, YP-T10



YP-T12

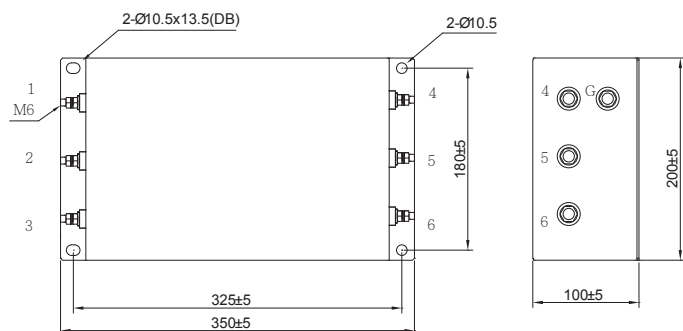


Filter Selection Table

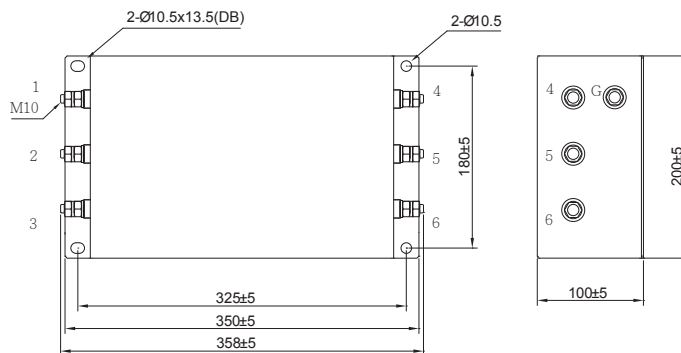
Part No.	Rated Current (A)	Inductance L (μH)	Capacitance CX (μF)	Capacitance CY (pF)	Resistance R (ohm)	Output connections
YP60T8	60					M8 Screw terminals
YP80T10	80					M10 Screw terminals
YP100T10	100					M12 Screw terminals
YP150T12	150					
YP200T12	200					
YP250T12	250					

Physical Dimensions: (mm)

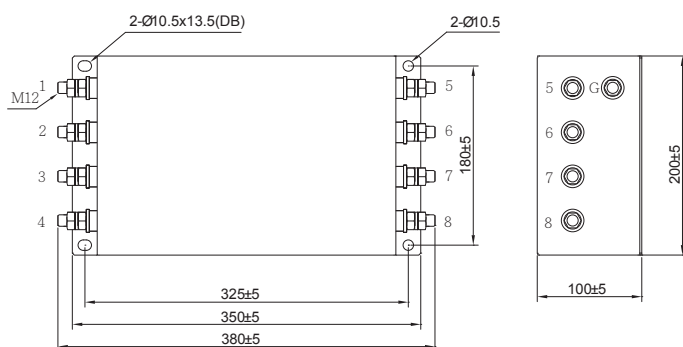
YP-T8



YP-T10

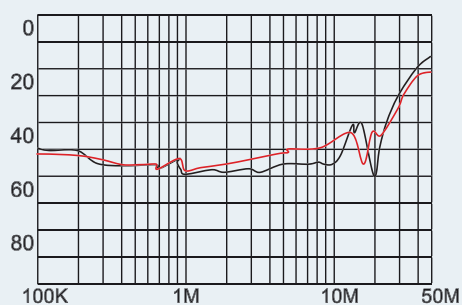


YP-T12

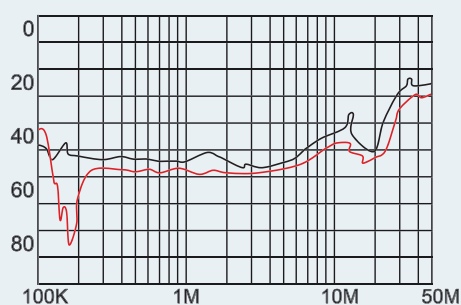


Typical filter attenuation (Common mode — Normal mode —)

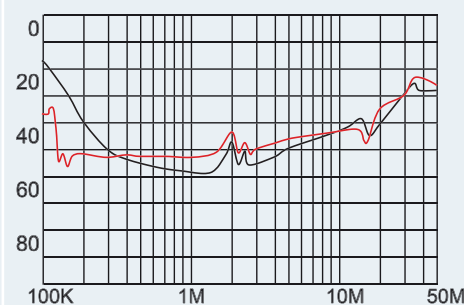
YP60



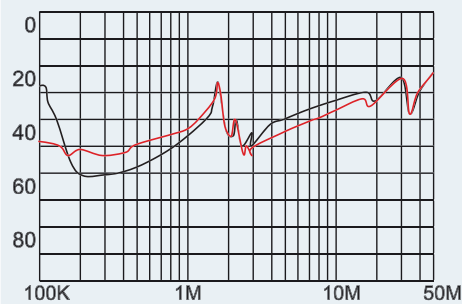
YP80



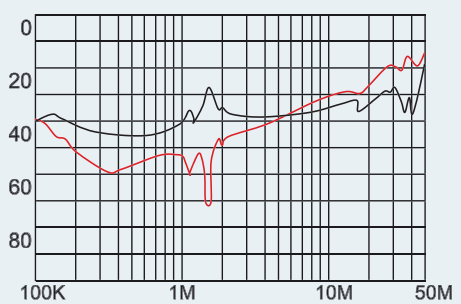
YP100



YP150



YP200



YP250

