

# YF-T12 SERIES (PC Board Mounting Filters)



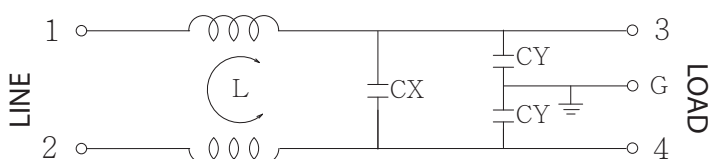
## Features

- Direct PC Board mounting for easy installation and compact for space saving, the reliable plastic cover at low cost.
- The rated current can be offered from 0.5 to 10 amps.
- Low leakage current version upon requested.
- All parts are approved by UL, CE
- Applications comprising Household equipment , Medical equipment, Test and measurement equipment, datacom equipment, automation equipment
- Custom-specific versions are available on request.

## Technical Specification

Rated voltage	125/250VAC
Rated currents	Up to 10A
Operating frequency	50/60Hz
Hipot rating(Line-to-line)	1450VDC
Hipot rating(Line-to-ground)	2250VDC
Operating temperature	-25~+85°C
Safety compliance	UL, CE

## Typical electrical schematic

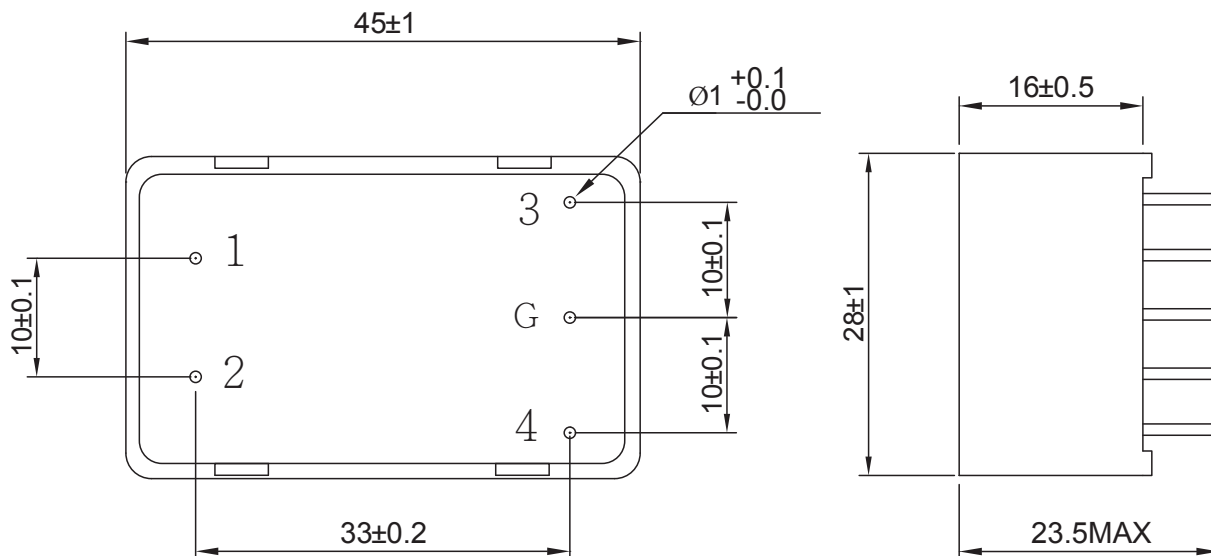


## Filter Selection Table

Part No.	Rated Current (A)	Inductance L(mH)	Capacitance CX( $\mu$ F)	Capacitance CY(pF)	Output connections
YF0R5T12	0.5				PCB terminal
YF1R5T12	1.5				
YF2R5T12	2.5				
YF6R5T12	6.5				
YF10T12	10				

# Physical Dimensions: (mm)

YF-T12



## Typical filter attenuation (Common mode — Normal mode —)

